

GDMFX BINARY OPTIONS ON MT4 TUTORIAL

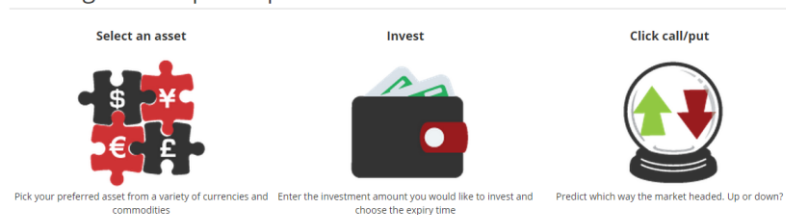
HOW TO SIGN UP FOR A BINARY OPTIONS ACCOUNT

1. You can trade Binary Options via the MetaTrader 4 platform. Just sign up for a demo or live account on our website. You can watch our [video tutorial](#). Please select Live or Demo Account and then choose your Account Category and Type. Also, please verify your Personal Details are correct before choosing your Password. Click Register to continue.
2. If you have registered a demo account, you will receive your MT4 credentials on your email. In a case of a live account, you will need to verify your email, log into your account and upload the necessary documents (proof of ID and proof of address). Once your live account is approved, you will receive an email titled "Account Approved!" containing your MT4 credentials.

HOW TO INSTALL THE MT4 BINARY OPTIONS EXTENSION

1. Go to the [Binary Options section](#) of our website. Scroll down to the "How to get started?" subsection and click on "[Download MT4 Binary Options extension](#)". Please make sure you meet the requirements: PC running Windows Vista or higher.

Trading in 3 Simple steps



Binary Options are great for traders that would like to trade the simplest question possible: is the price going to go Up or Down? Say that you think GBP/USD will go down over the next minute. Even if it only goes down by 0.1 pip, you win. If it goes up, even by the smallest amount, then your loss is limited to the amount that you put at risk.

Binary Options help traders sleep easier because it is so simple. The price can only go Up or Down. And, you know exactly how much money you will make or break when the trade is over.

How to get started?

1. Open Live Account
2. Login to Trader's room
3. Deposit funds
4. Download MT4 Platform
5. Download MT4 Binary Options Extension (Supported OS: Windows XP and Higher, Server used for Binary: [live20.gdmfx.com](#))
6. Start Trading

Global Derivative Capital Markets NZ Ltd

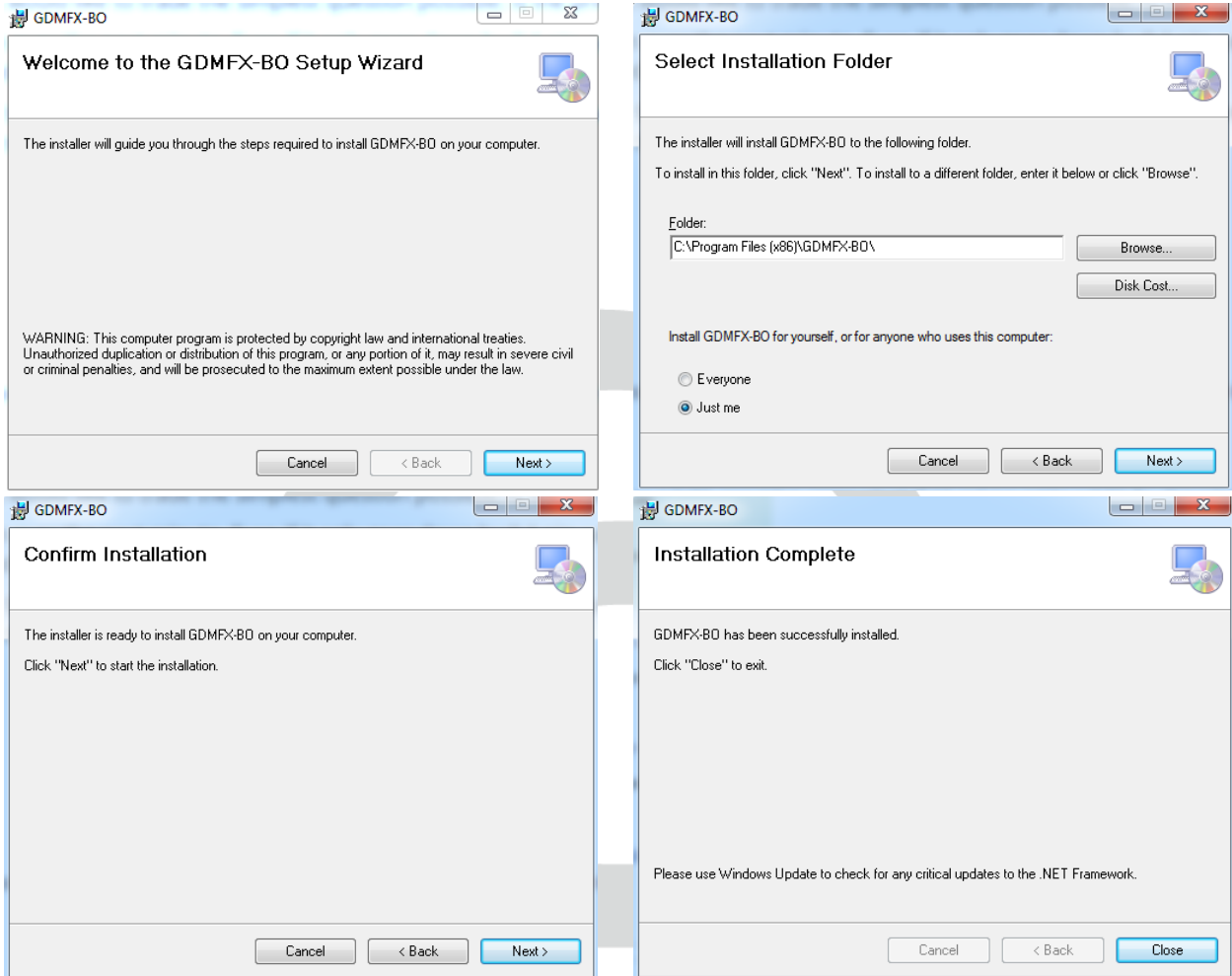
Telephone: +64 9951 8201

e-mail: customersupport@gdmfx.com

Derivative trading carries a significant risk to your capital

www.gdmfx.com

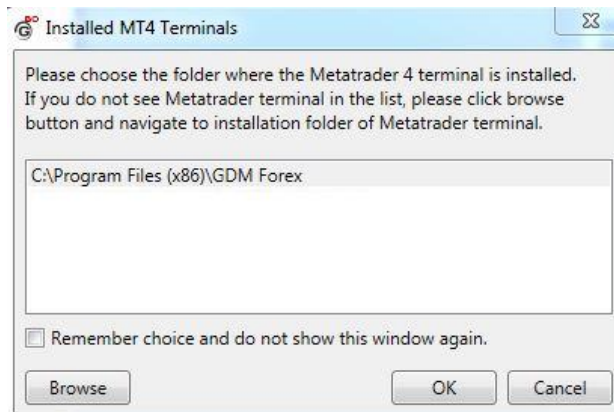
2. Run the downloaded file and follow the onscreen instructions



3. Upon successful installation, click on the new GDMFX Binary Options platform shortcut icon on your desktop with the name of "GDMFX-BO". If the shortcut is not created, go to your start menu and run "GDMFX-BO".



4. Make sure that you have selected the GDM Forex Meta Trader 4 platform to integrate the Binary Options Extension with. Click 'OK'.



HOW TO TRADE GDMFX BINARY OPTIONS IN MT4?

1. Enter your Login Number and Password as provided in your account registration, and select the respective server from the drop-down menu. Click "Login".



2. Once logged in, the regular MT4 platform will appear. Go to the MarketWatch window -> Right click -> Show All. All the Binary Options instruments have a "bo" suffix in their names. In case you would like to open an instrument's chart, right click on it in the MarketWatch -> Chart window.

Global Derivative Capital Markets NZ Ltd

Telephone: +64 9951 8201

e-mail: customersupport@gdmfx.com

Derivative trading carries a significant risk to your capital

www.gdmfx.com

Market Watch: 09:33:44

Symbol	Bid	Ask
EURUSDbo	1.09783	1.09783
USDCHFbo	0.95528	0.95528
GBPUSDbo	1.56057	1.56057
AUDUSDbo	0.73987	0.73987
USDCADbo	1.29863	1.29863
NZDUSDbo	0.66711	0.66711
AUDNZDbo	1.10909	1.10909
AUDCADbo	0.96080	0.96080
AUDCHFbo	0.70677	0.70677
CHFJPYbo	129.670	129.670
EURGBPbo	0.70349	0.70349
EURAUDbo	1.48388	1.48388
EURJPYbo	135.984	135.984
EURNZDbo	1.64589	1.64589
EURCADbo	1.42570	1.42570
GBPCHFbo	1.49075	1.49075
GBPAUDbo	1.49075	1.49075

Symbols | Tick Chart

3. To open the Binary Options new order window, double click on a BO in the MarketWatch.

Binary Option Trading

Symbol: EURUSDbo
 Investment: 10
 Expiry: 60 sec
 Order type: Market
 Execution price: 0.00000


Payout: 80 %
 Trade Return: 18.00

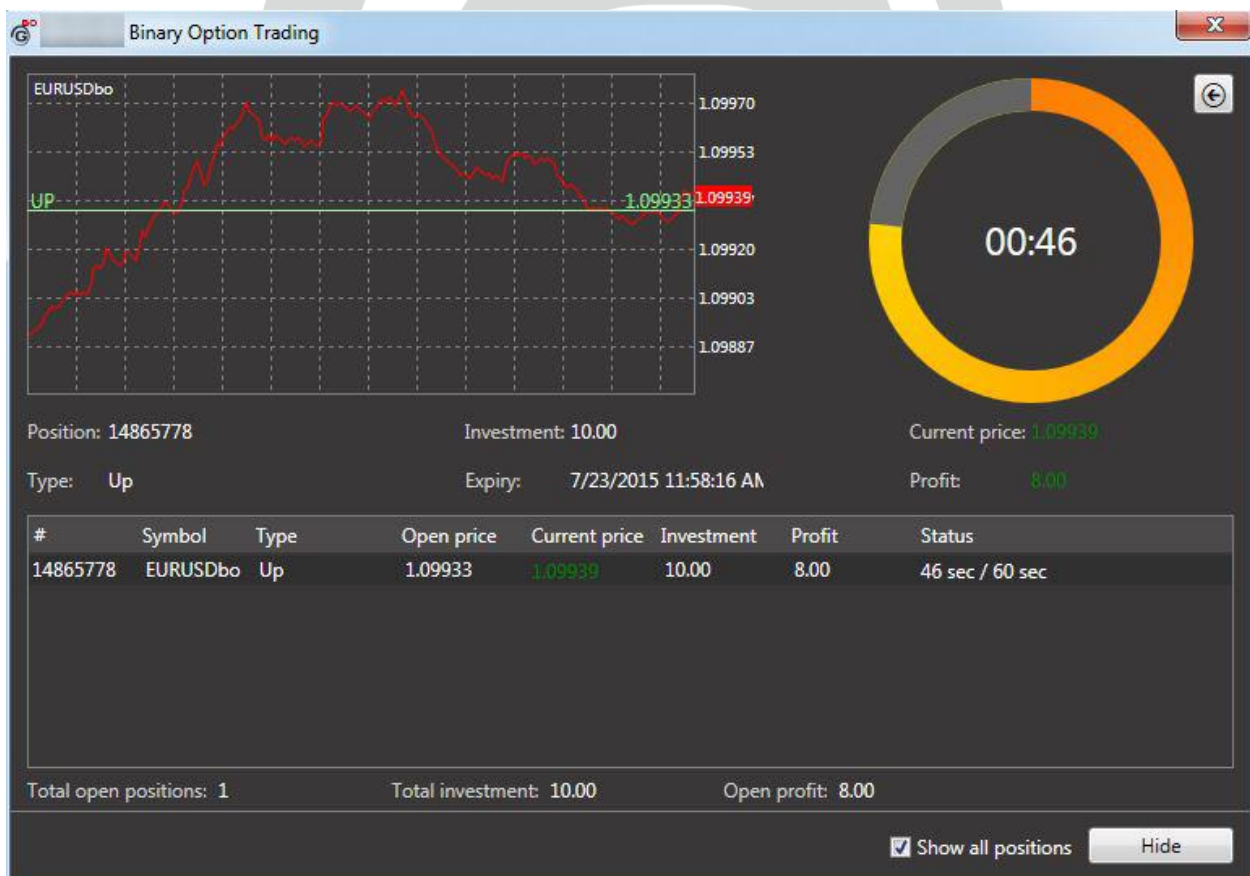
Up Down

#	Symbol	Type	Open price	Current price	Investment	Profit	Status
Total open positions: 0							
Total investment: 0.00				Open profit: 0.00			

Show all positions Hide

4. A tick chart will be displayed within the new trade window. Once you make your analysis and are ready to place a trade, select:

- The instrument - whenever necessary, by default double clicking on an instrument in the MarketWatch panel will open the new order window for the same instrument
 - The investment. The minimum investment is 10 currency units of your MT4 account's base currency; the maximum per trade and combined for all BO positions can be seen on the [Account Types section](#) of our website. You can either select an amount from the drop-down menu, or manually enter an amount divisible by 10
 - The expiry: you can choose one ranging from 60 seconds up to 1 day
 - Order type: in case you would like to open a trade at the present time and current price, select "Market". In case you would like to activate a pending order, select "Pending"
 - If you chose "Pending" above, enter a desired price in the "Execution price" field
 - Click on "Up" or "Down" based on your analysis.
5. If you placed a Market order in the previous step, the window will display a countdown timer, the ticket number, the chosen investment, the direction you selected, the expiry, the current price and the current profit. In case you would like to return to the new order window, click on the  button.



6. After the time as per your position passes, it is automatically closed. The result will appear on your screen. There are 3 possibilities: if at expiry the price went in your direction, you will earn the payout you saw at the time you opened it; if the price went against you, you will just have to pay the investment you chose at the time you opened your position; if the price is exactly the same as the price at the position's opening then it is a draw and the result is zero.



7. You can see the result of your position in the Account History tab of your Terminal panel. Each Binary Options trade has 2 tickets in the account history log: one ticket with zero Profit/Loss, and another ticket with the actual result.

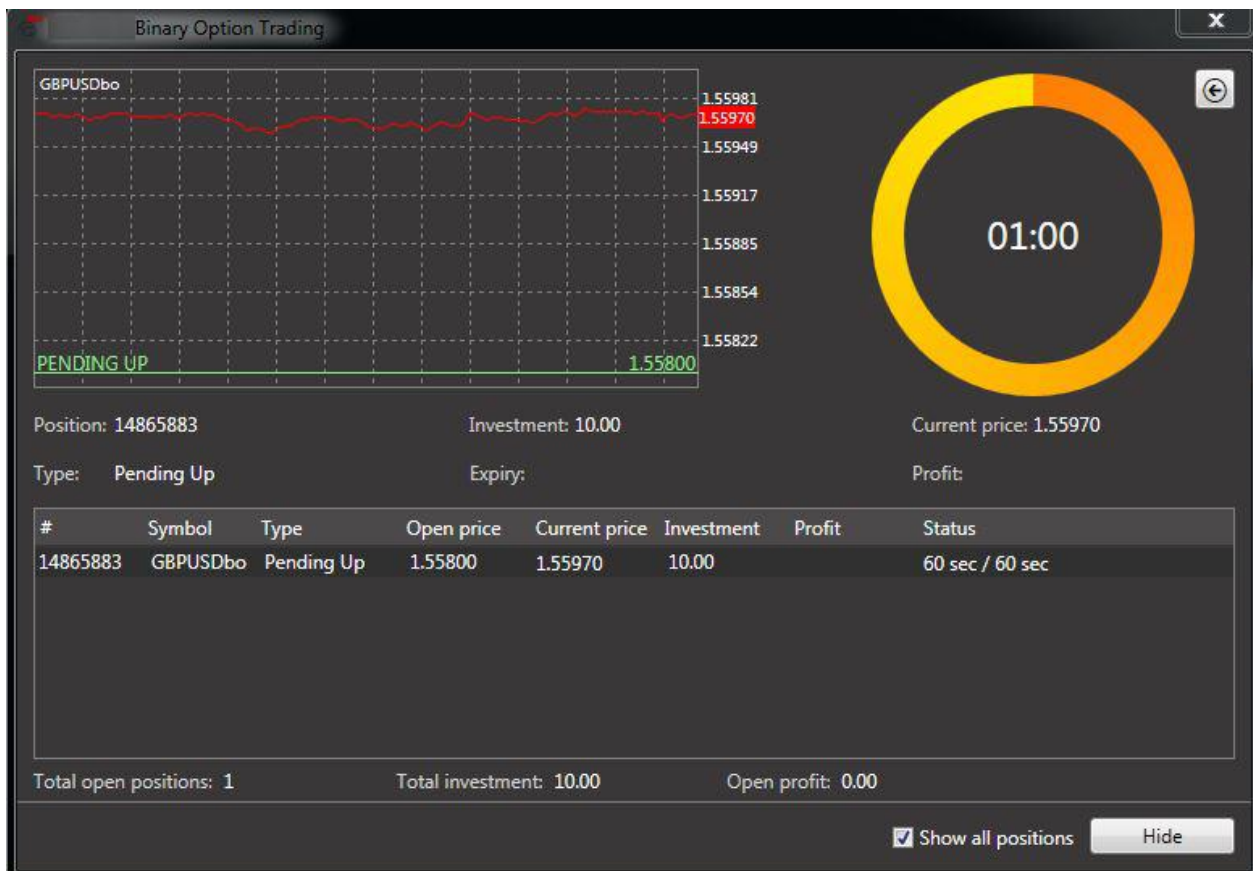
The screenshot shows the 'Terminal' window with the 'Account History' tab selected. It displays two tickets for a binary option trade:

Order /	Time	Type	Size	Symbol	Price	S / L	T / P	Time	Price	Swap	Profit
14865778	2015.07.23 08:57:16	buy	0.01	eurusdbo	1.09933	0.00000	0.00000	2015.07.23 08:58:16	1.09940	0.00	0.00
14865781	2015.07.23 08:58:16	balance									8.00

Summary: Profit/Loss: 0.00 Credit: 0.00 Deposit: 8.00 Withdrawal: 0.00

Navigation tabs: Trade | Exposure | Account History | News | Alerts | Mailbox 49 | Market 47 | Signals | Code Base | Experts | Journal

8. In case you placed a pending order in step # 4 above, it will appear in the BO trade window similarly to step # 5 above. The timer will not start counting down until the current price reaches or passes the opening price you have set.



- If you would like to cancel a pending order on Binary Options, go to the Trade tab of the Terminal panel, find the ticket for your pending order and click on the **X** button (one-click trading should be enabled).

The screenshot shows the 'Terminal' window with the following order list:

Order	Time	Type	Size	Symbol	Price	S / L	T / P	Price	Commissi...	Swap	Profit
○ Balance: 128.00 EUR Equity: 128.00 Free margin: 128.00											
14865883	2015.07.23 09:18:46	buy limit	0.01	gbpusdbo	1.55800	0.00000	0.00000	1.55967			0.00

The 'Trade' tab is selected, and a cancel button (X) is visible in the Profit column for the order.



HIGH RISK INVESTMENT WARNING: Trading Binary Options is highly speculative, carries a level of risk and may not be suitable for all investors. You may lose some or all of your invested capital; therefore, you should not speculate with capital that you cannot afford to lose. You should be aware of all the risks associated with trading Binary Options. USA REGULATION NOTICE: Binary Options Companies (including GDMFX) are not regulated within the United States. These companies are not supervised, connected or affiliated with any of the regulatory agencies such as the Commodity Futures Trading Commission (CFTC), National Futures Association (NFA), Securities and Exchange Commission (SEC) or the Financial Industry Regulatory Authority (FINRA). Please take notice that any unregulated trading activity by U.S. Citizens is considered unlawful. GDMFX does not accept customers located within the United States or holding an American citizenship. SITE RISK DISCLOSURE: GDMFX does not accept any liability for loss or damage as a result of reliance on the information contained within this website; this includes education material, price quotes and charts, and analysis. Please be aware of the risks associated with trading the financial markets; never invest more money than you can risk losing. The risks involved in trading Binary Options may not be suitable for all investors. GDMFX doesn't retain responsibility for any trading losses you might face as a result of using the data hosted on this site.

END OF TUTORIAL

Global Derivative Capital Markets NZ Ltd

Telephone: +64 9951 8201

e-mail: customersupport@gdmfx.com

Derivative trading carries a significant risk to your capital

www.gdmfx.com